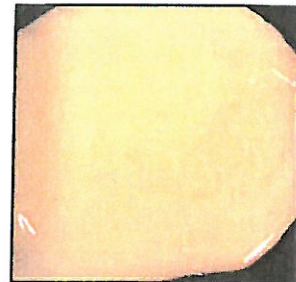
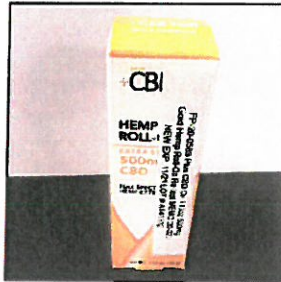




CV SCIENCES™

Certificate of Analysis
September 16, 2020

Sample ID: FP-20-0589
Product name: Plus CBD Oil Gold
Hemp Roll-On Re-test
Batch/Lot#: A141302
Strength: 1.13oz 500mg
New Expiration: 11/21 per MEMO-20-023
Analyst HP



| <u>Physical properties</u> | <u>Result</u> | <u>Method</u> |
|----------------------------|---------------|---------------|
| Appearance | Pass | Organoleptic |
| Color | Pass | Organoleptic |
| Aroma | Pass | Organoleptic |

| <u>Cannabinoid:</u> | <u>mg:</u> | <u>Method:</u> |
|----------------------------|-----------------|----------------|
| CBD | 497.34 | HPLC |
| CBDV | 7.81 | HPLC |
| CBDA | ND | HPLC |
| CBGA | ND | HPLC |
| CBG | 5.10 | HPLC |
| CBN | ND | HPLC |
| Δ ⁹ -THC | 11.32 | HPLC |
| CBC | 35.98 | HPLC |
| THCA | ND | HPLC |
| Total cannabinoids: | 557.6 mg | |
| Sample size: | 32.00 g | |
| THC by mass: | 0.0354 % | |

ND = NOT DETECTED

Hayley Palmer

SEP 16 2020

Vandana Kothari

SEP 16 2020

Analyst _____ Date _____
Hayley Palmer, B.S.
QC Lab Assistant

Reviewed By _____ Date _____
Vandana Kothari, M.S., B.Pharm.
QC Supervisor

This Certificate of Analysis has been generated to document product test results. The "Reviewed By" signature does not indicate finished product release for distribution.



Certificate of Analysis

CV Sciences, Inc.

10070 Barnes Canyon Road
San Diego, CA 92121
Vandana Kothari

Sample

2009DBL0127.8638

Batch FP-20-0589

Lot A141302

Ordered 9/11/2020

Completed 9/16/2020

Plus CBD Oil 1.13oz 500mg Gold Hemp Roll-On Re-test, New Expiration: 11/21 per MEMO-20-023

| Cannabinoids | | | | |
|---------------------|---------------|-------------|-----------|--------------------|
| | 519.80 | 1.62 | 32 | |
| Total CBD (mg/unit) | | % Total CBD | | Unit weight (g) |
| Cannabinoid | LOQ | Mass % | Mass % | Concentration mg/g |
| CBD | 0.08 | 1.62 | 16.2 | |
| CBDA | 0.08 | <LOQ | <LOQ | |
| d9-THC | 0.08 | <LOQ | <LOQ | |
| THCA-A | 0.08 | <LOQ | <LOQ | |
| dB-THC | 0.08 | <LOQ | <LOQ | |
| THCV | 0.08 | <LOQ | <LOQ | |
| CBDV | 0.08 | <LOQ | <LOQ | |
| CBDVA | 0.08 | <LOQ | <LOQ | |
| CBGA | 0.08 | <LOQ | <LOQ | |
| CBG | 0.08 | <LOQ | <LOQ | |
| CBN | 0.08 | <LOQ | <LOQ | |
| CBC | 0.08 | <LOQ | <LOQ | |
| CBL | 0.08 | <LOQ | <LOQ | |

| Pesticides/Plant Growth Regulators | | | |
|------------------------------------|--------|--------------|-----------|
| Pesticides | Status | Sample (PPB) | LOQ (PPB) |
| Acequinocyl | PASS | <LOQ | 10 |
| Abamectin | PASS | <LOQ | 10 |
| Bifenazate | PASS | <LOQ | 10 |
| Fenoxycarb | PASS | <LOQ | 10 |
| Fludioxonil | PASS | <LOQ | 10 |
| Imidacloprid | PASS | <LOQ | 10 |
| Myclobutanil | PASS | <LOQ | 10 |
| Pyrethrin | PASS | <LOQ | 10 |
| Spinosad | PASS | <LOQ | 10 |
| Spiromesifen | PASS | <LOQ | 10 |
| Spirotetramat | PASS | <LOQ | 10 |
| Tebuconazole | PASS | <LOQ | 50 |
| Plant Growth Regulators | | | |
| Daminozide | PASS | <LOQ | 10 |

| Residual Solvents | | |
|--------------------|--------|-------------|
| Compound | Status | Limit (PPM) |
| Propane | PASS | 500 |
| Methanol | PASS | 500 |
| Isobutane | PASS | 500 |
| Ethanol | PASS | 500 |
| Isopropanol | PASS | 500 |
| Isopentane | PASS | 500 |
| n-Butane | PASS | 500 |
| n-Hexane | PASS | 500 |
| 2,2-Dimethylbutane | PASS | 500 |
| 3-Methylpentane | PASS | 500 |
| 2-Methylpentane | PASS | 500 |
| Cyclohexane | PASS | 500 |
| Neopentane | PASS | 500 |
| n-Heptane | PASS | 500 |
| n-Pentane | PASS | 500 |
| Benzene | PASS | 500 |

| Microbiology | | | | |
|-----------------------|-----------|--------------------------|--------------|---------|
| Quantitative Analysis | Status | Sample | LOQ | Limit |
| | Pass/Fail | CFU/g | CFU/g | CFU/g |
| Mold/Mildew/Yeast | PASS | <LOQ | 9 | 10,000 |
| Enterobacteriaceae | PASS | <LOQ | 9 | 1,000 |
| Aerobic Bacteria | PASS | <LOQ | 9 | 100,000 |
| Coliforms | PASS | <LOQ | 9 | 1,000 |
| Qualitative Analysis | | Detected or Not-detected | | |
| E. Coli | PASS | | Not-detected | |
| Salmonella | PASS | | Not-detected | |
| Pseudomonas | PASS | | Not-detected | |

| Heavy Metals | | | | |
|--------------|-----------|--------|-----|-------|
| Compound | Status | Sample | LOQ | Limit |
| | Pass/Fail | PPB | PPB | PPB |
| Arsenic | PASS | <LOQ | 43 | 1500 |
| Cadmium | PASS | <LOQ | 43 | 500 |
| Mercury | PASS | <LOQ | 43 | 1000 |
| Lead | PASS | 76 | 43 | 500 |

1. The hemp extract is the product of a batch tested by the independent testing laboratory;
2. The batch contained a total delta-9-tetrahydrocannabinol concentration that did not exceed 0.3 percent pursuant to the testing of a random sample of the batch; and
3. The batch does not contain contaminants unsafe for human consumption.*



Stacy Gardalen

Stacy Gardalen
Director

HP

Glen Marquez
Quality Control



4439 Polaris Ave.
Las Vegas, NV 89103
(702)729-5180
www.dblabslv.com

The reported result is based on a sample weight with the applicable moisture content for that sample. LOQ = Limit of Quantitation. NA = Not Analyzed. ND = Not Detected. PGR = Plant Growth Regulator. Unless otherwise stated all quality control samples performed within specifications established by the Laboratory. This product has been tested by DB Labs, LLC (MMEN# 61887736101164525768) using valid testing methodologies and a quality system as required by Nevada state law. Values reported relate only to the product tested. DB Labs makes no claims as to the efficacy, safety or other risks associated with any detected or non-detected levels of any compounds reported herein. *Tested analytes and limits were set by the customer. This Certificate shall not be reproduced except in full, without the written approval of DB Labs.